




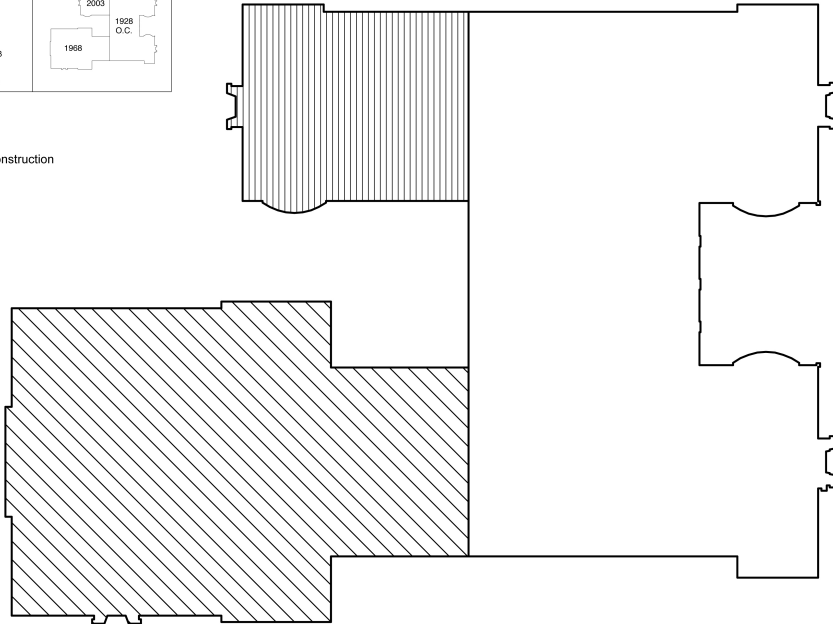


Oakwood School District
E. D. Smith Elementary School
Plot Plan

GRADE CONFIGURATION: Pre-k, 1-6
 CURRENT ENROLLMENT: 458
 CONSTRUCTION DATES: 1928, 1968 & 2003
 ACREAGE: 3.00
 EXISTING BUILDING AREA: 63,563 SF
 SQUARE FOOTAGE PER STUDENT: 182.45



-  1928 Original Construction
-  1968 Addition
-  2003 Addition

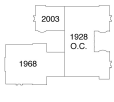


LegatKingscott
 ARCHITECTS INTERIOR DESIGNERS PLANNERS

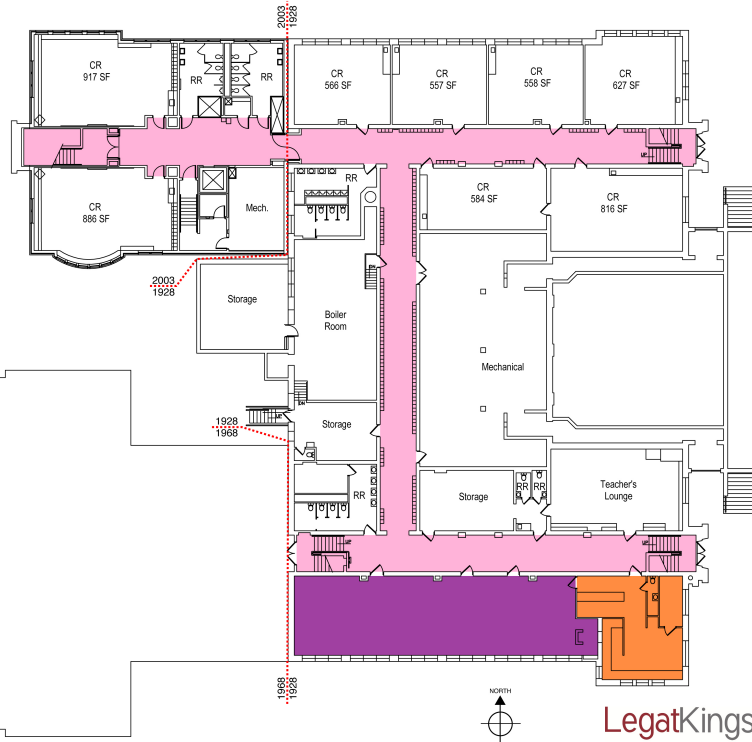
**Oakwood School District
E. D. Smith Elementary School
First Floor Plan**

GRADE CONFIGURATION: Pre-K, 1-6
CURRENT ENROLLMENT: 458
CONSTRUCTION DATES: 1928, 1968 & 2003
ACREAGE: 3.00
EXISTING BUILDING AREA: 83,563 SF
SQUARE FOOTAGE PER STUDENT: 182.45

KEY PLAN



- **Corridors**
Overall Facility Square Footage: 13,281 SF
- **Kitchen**
Total Square Footage: 702 SF
- **Student Dining**
Total Square Footage: 1,717 SF
- **Media Center**
Total Square Footage: 2,814 SF
- **Gymnasium**
Gymnasium Square Footage: 7,334 SF

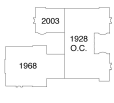


LegatKingscott
ARCHITECTS INTERIOR DESIGNERS PLANNERS

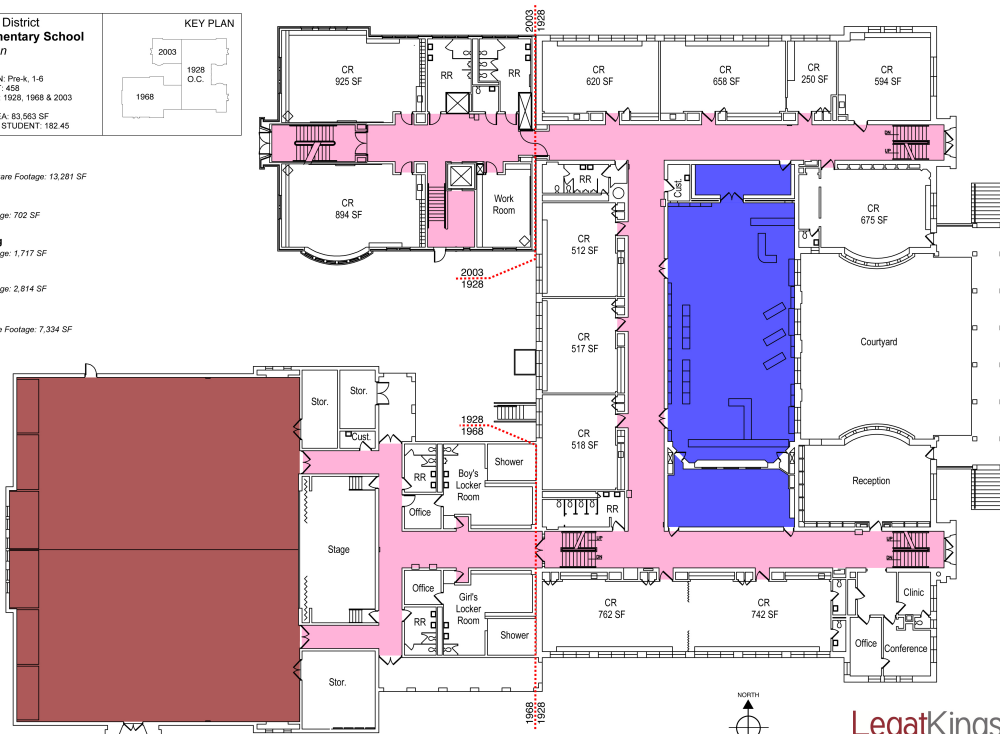
**Oakwood School District
E. D. Smith Elementary School
Second Floor Plan**

GRADE CONFIGURATION: Pre-K, 1-6
CURRENT ENROLLMENT: 458
CONSTRUCTION DATES: 1928, 1968 & 2003
ACREAGE: 3.00
EXISTING BUILDING AREA: 83,563 SF
SQUARE FOOTAGE PER STUDENT: 182.45

KEY PLAN



- **Corridors**
Overall Facility Square Footage: 13,281 SF
- **Kitchen**
Total Square Footage: 702 SF
- **Student Dining**
Total Square Footage: 1,717 SF
- **Media Center**
Total Square Footage: 2,814 SF
- **Gymnasium**
Gymnasium Square Footage: 7,334 SF



LegatKingscott
ARCHITECTS INTERIOR DESIGNERS PLANNERS

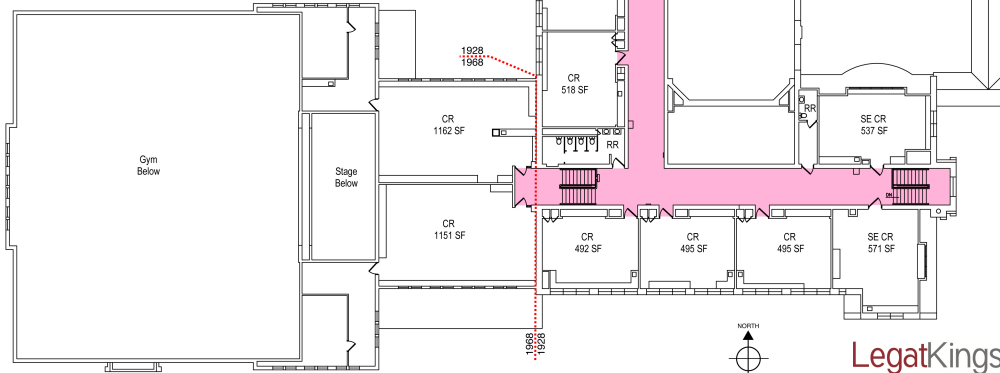
**Oakwood School District
E. D. Smith Elementary School
Third Floor Plan**

GRADE CONFIGURATION: Pre-K, 1-6
CURRENT ENROLLMENT: 458
CONSTRUCTION DATES: 1928, 1968 & 2003
ACREAGE: 3.00
EXISTING BUILDING AREA: 83,963 SF
SQUARE FOOTAGE PER STUDENT: 182.45

KEY PLAN



- **Corridors**
Overall Facility Square Footage: 13,281 SF
- **Kitchen**
Total Square Footage: 702 SF
- **Student Dining**
Total Square Footage: 1,717 SF
- **Media Center**
Total Square Footage: 2,814 SF
- **Gymnasium**
Gymnasium Square Footage: 7,334 SF



LegatKingscott
ARCHITECTS INTERIOR DESIGNERS PLANNERS